

Goniostat for the Tormek

User Manual

Version 1
18 September 2024

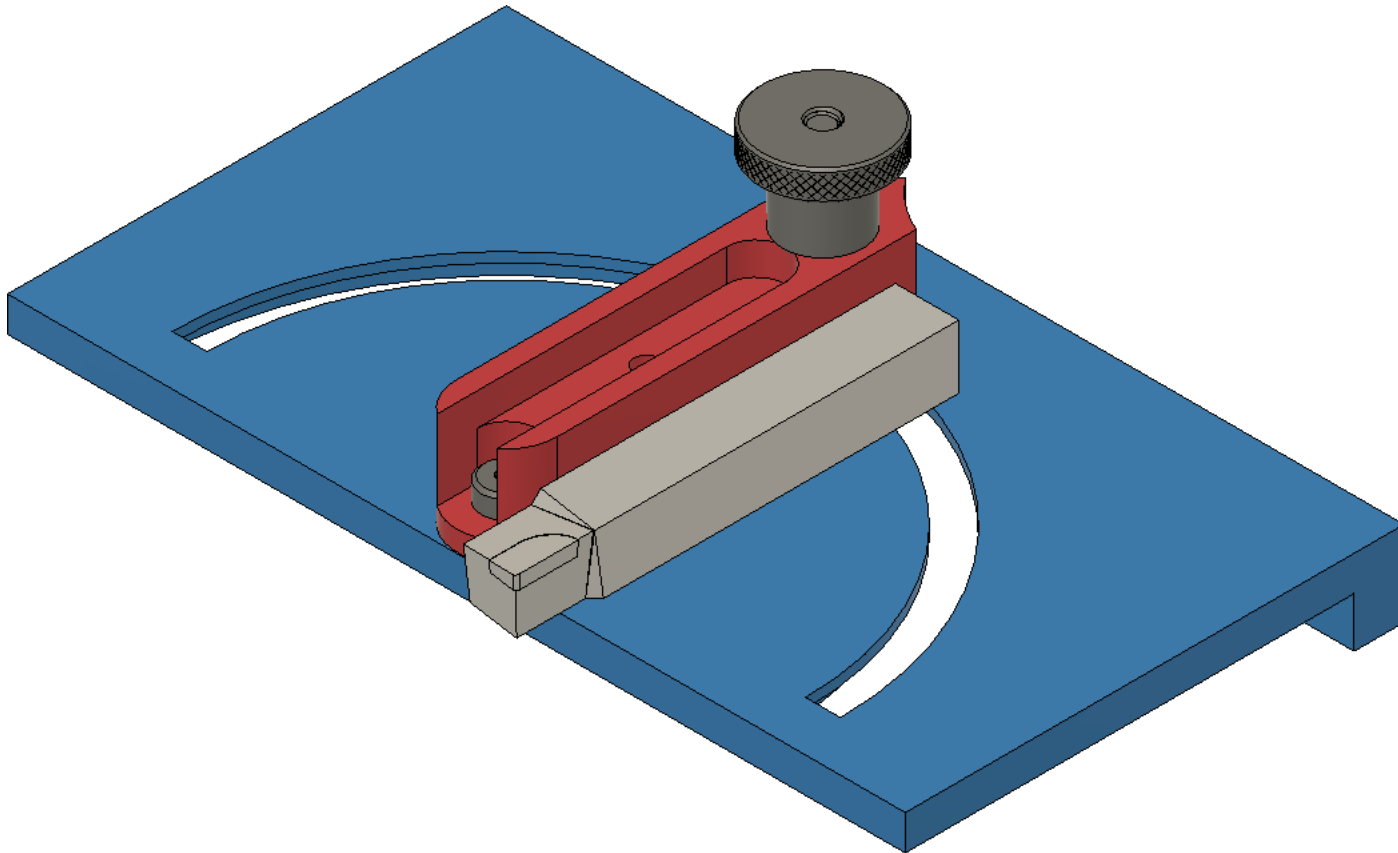
Goniostat for Tormek

Using the goniostat jig with a typical square lathe tool

The tool (gray) is held against the tool fence (red). The base plate (blue) slides left and right on the Tormek SVD-110.

The angle used for the tool fence can be set using a typical student's compass.

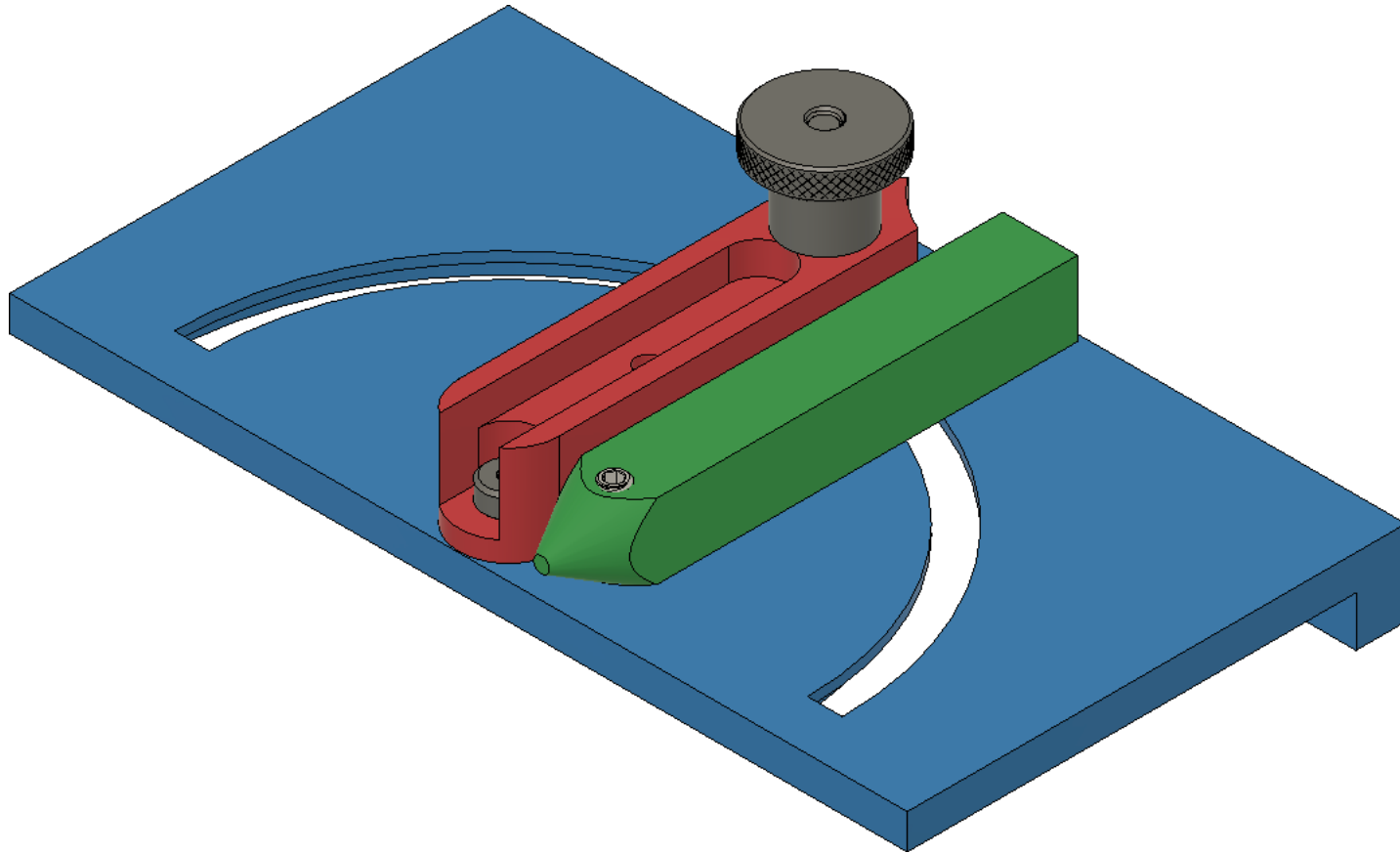
The angle for the base plate as it pertains to the grindstone is set using the WM-200.



Goniostat for Tormek

Using the goniostat jig with a round tool

The tool is held in the tool holder (green) using a set screw (#105). The tool holder is held against the tool fence (red). The base plate (blue) slides left and right on the Tormek SVD-110.



Goniostat for Tormek

Using the goniostat jig with a round tool where both wings of the tool need to be equal length

The tool is held in the tool holder using the thumb screw, part #106 (this replaces the set screw).

The tool depth stop (yellow) is attached to the tool fence using part #104. The depth of the grind is set by sliding the depth stop to the desired setting and locked down using the thumb screw.

The tool holder (green) is held against the tool fence (red). The base plate (blue) slides left and right on the Tormek SVD-110.

